



Lift Stations

PRODUCT GUIDE & TECHNICAL REFERENCE MANUAL

Providing the right solutions.



LIFT STATIONS

Shaw Precast Solutions manufactures a variety of precast lift station configurations to suit project requirements, ranging from small capacity pump chambers using 1200mm manhole sections, to large volume lift stations using 3660mm x 3660mm rectangular box sections.

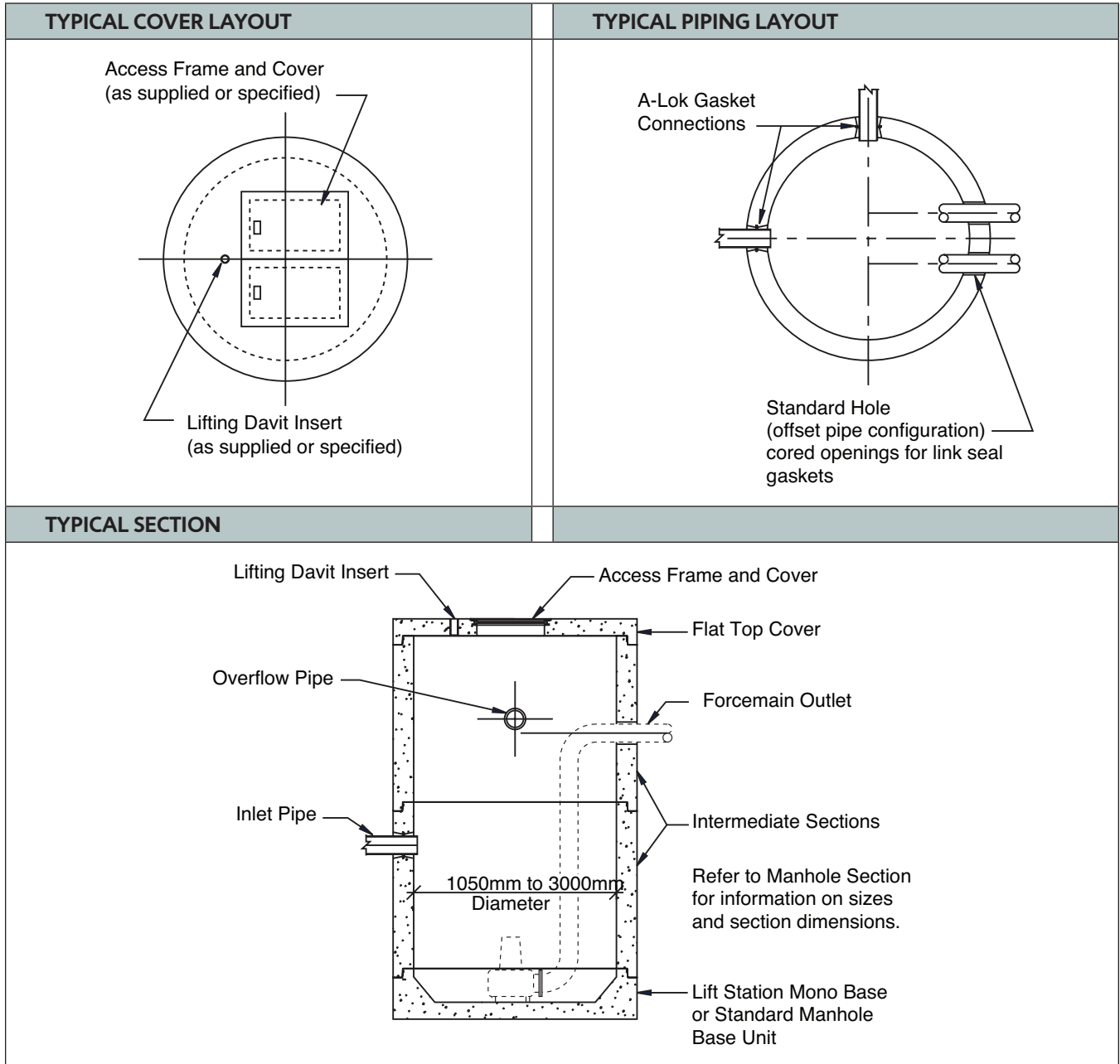
A Shaw Precast Solutions precast concrete lift station is a high quality, low maintenance structure, produced to project specifications in a controlled plant environment to ensure a durable and economic product. Precast elements can be designed to meet almost any configuration required for the project. On-site installation will be quicker and easier, allowing equipment installation and commissioning of the system sooner than cast-in-place designs.

Lift stations units can be fabricated using standard manhole sections, standard box culvert sections, or utility vault sections. Interior walls, baffles, and balconies can be cast into the standard sections where design requirements call for such. Access hatches, lifting davit sockets and vent stacks can be cast into the concrete covers to match design needs.

Pipe openings are cast into the lift station sections to suit the pipe configurations, utilizing either A-Lok gaskets, Link-Seal connections or grouted openings. Other connection types are available upon request.

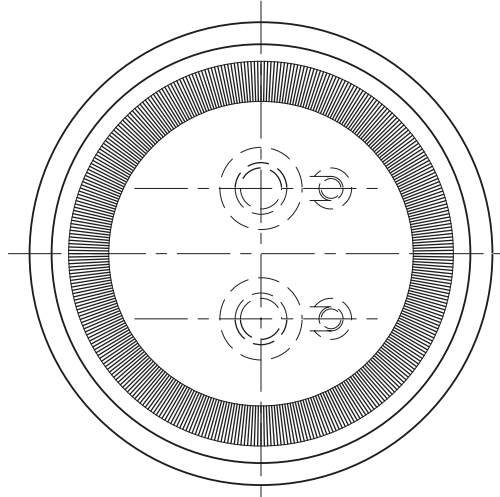
Our design team is available to provide assistance with your project needs, and discuss possible options and their feasibility.

TYPICAL LIFT STATION CONFIGURATION FOR LARGE DIAMETER MANHOLE SECTIONS

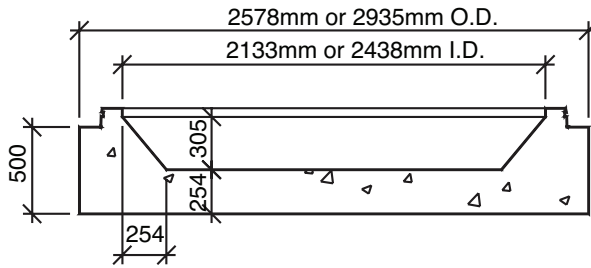


2100mm, 2400mm & 3000mm DIAMETER LIFT STATION MONO BASE

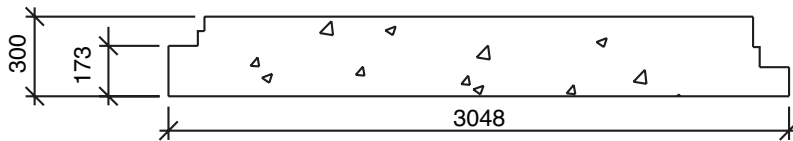
TYPICAL PLAN VIEW



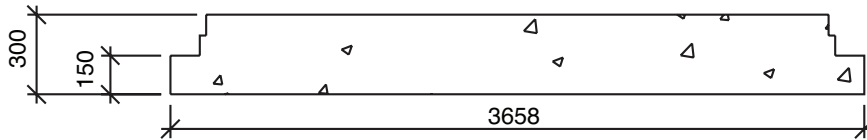
TYPICAL SECTION - QBS 300



TYPICAL SECTION - QBS 300 MONO



TYPICAL SECTION - TBS 300 MONO



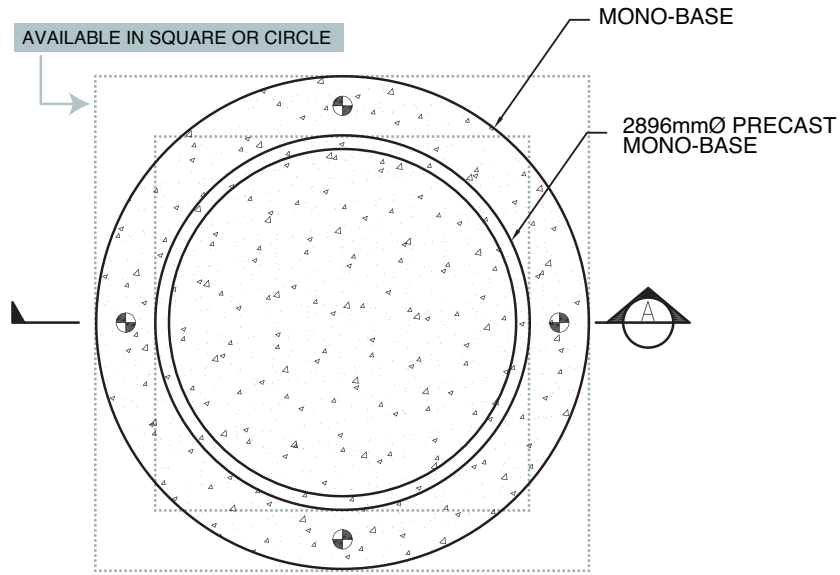
SECTION A - WBS 300



REVISED DECEMBER 24, 2012

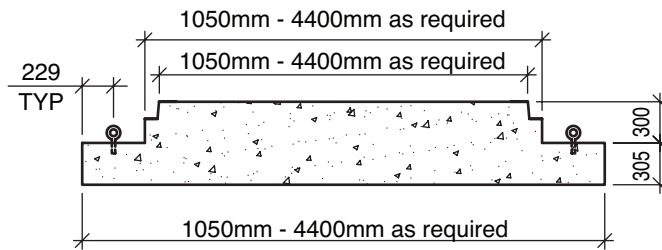
MONOLITHIC BASE WITH TIE DOWN SLAB

PLAN VIEW



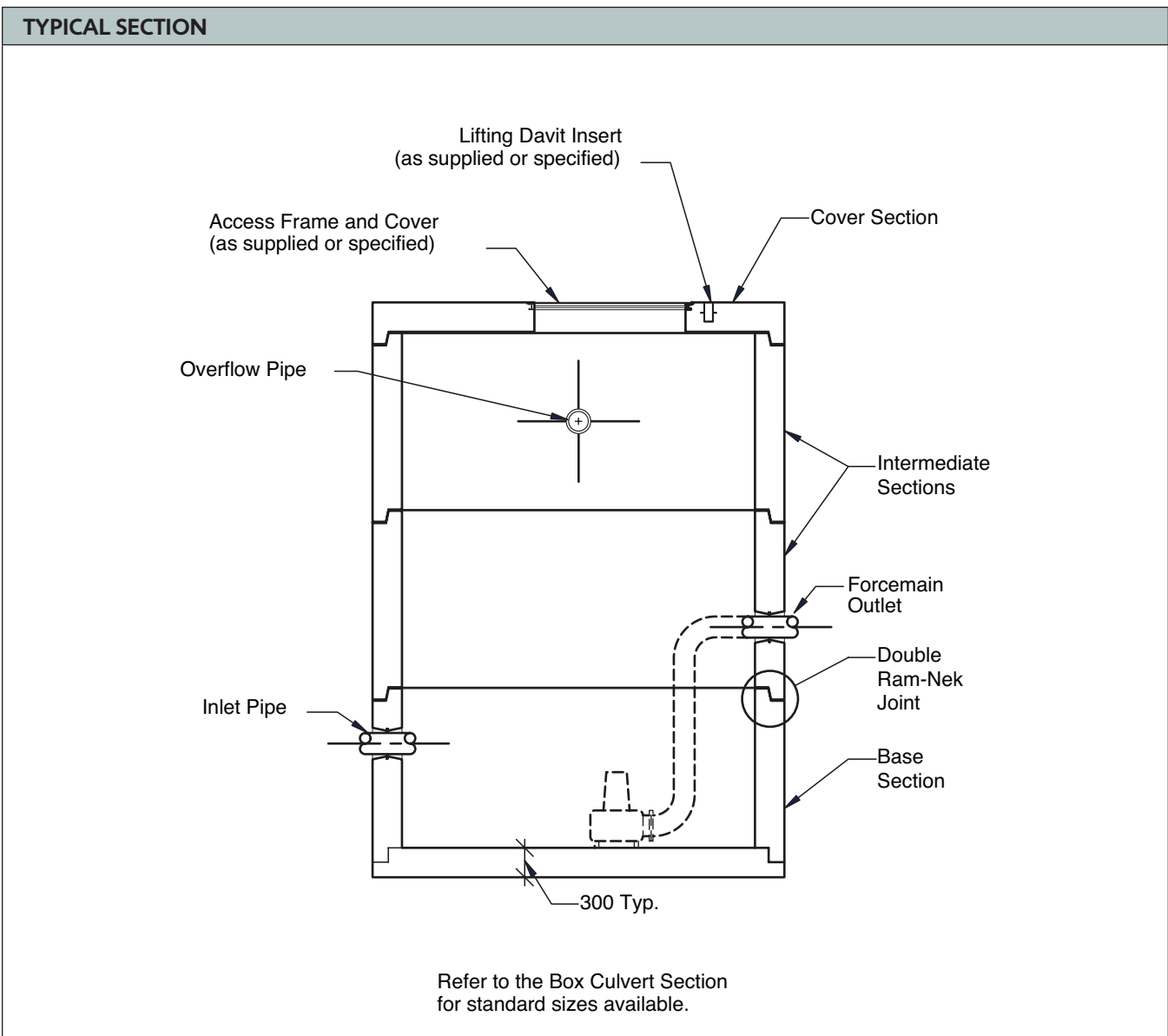
PLAN - MONO BASE / TIE-DOWN SLAB

SECTION A MONO BASE



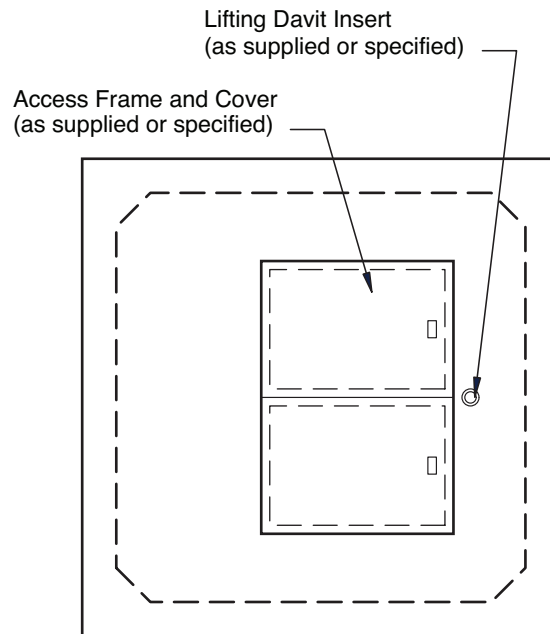
SECTION (A) MONO BASE

TYPICAL LIFT STATION CONFIGURATION UTILIZING BOX CULVERT SECTIONS

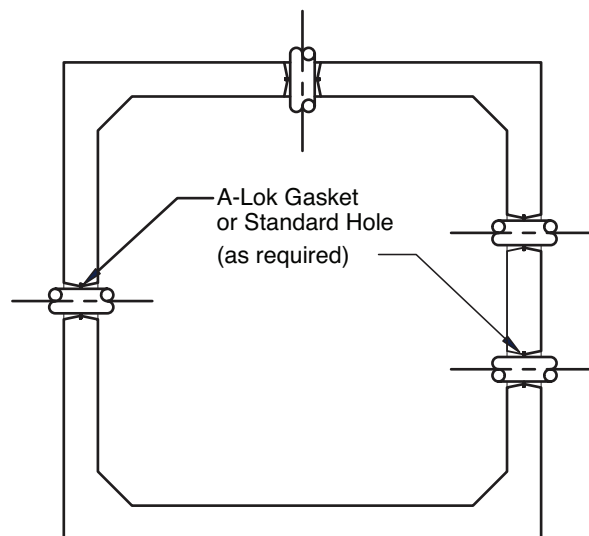


TYPICAL LIFT STATION CONFIGURATION UTILIZING BOX CULVERT SECTIONS

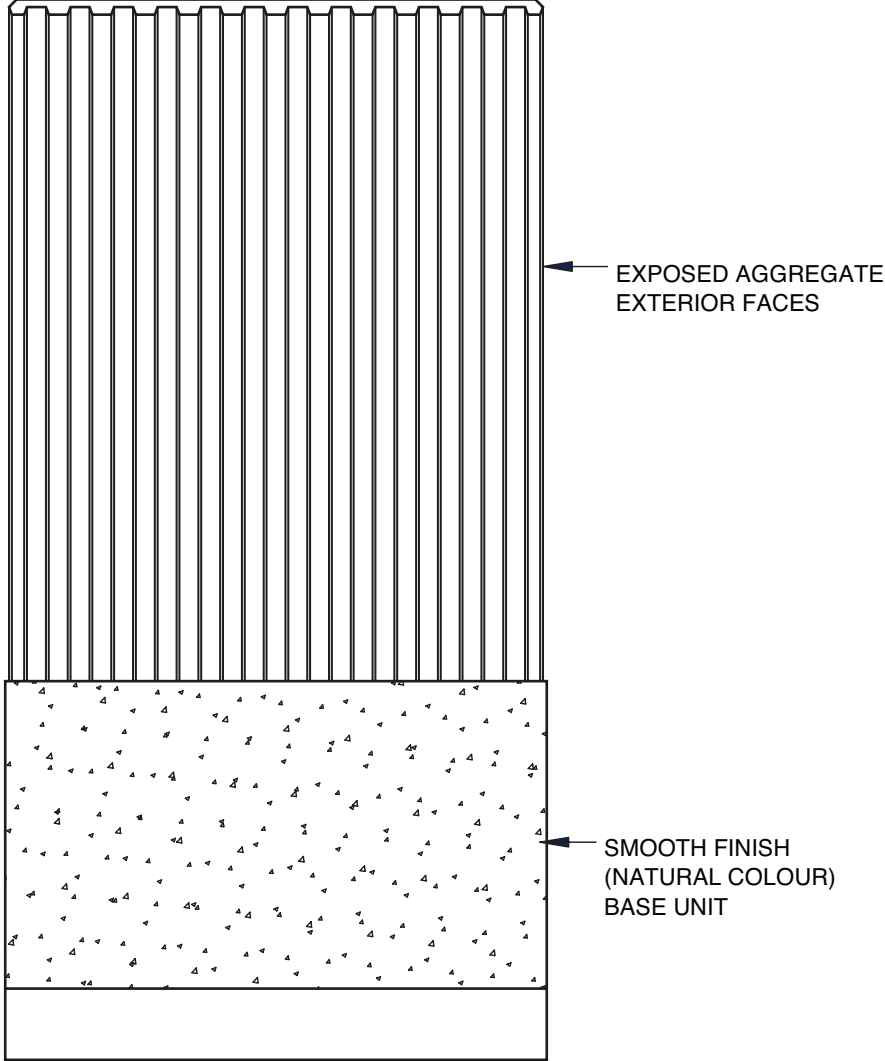
TYPICAL COVER LAYOUT



TYPICAL PIPING LAYOUT

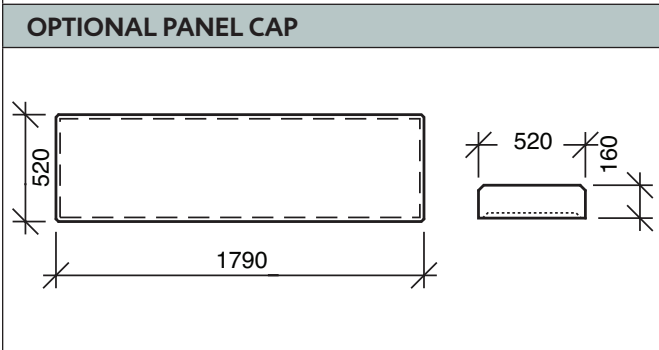
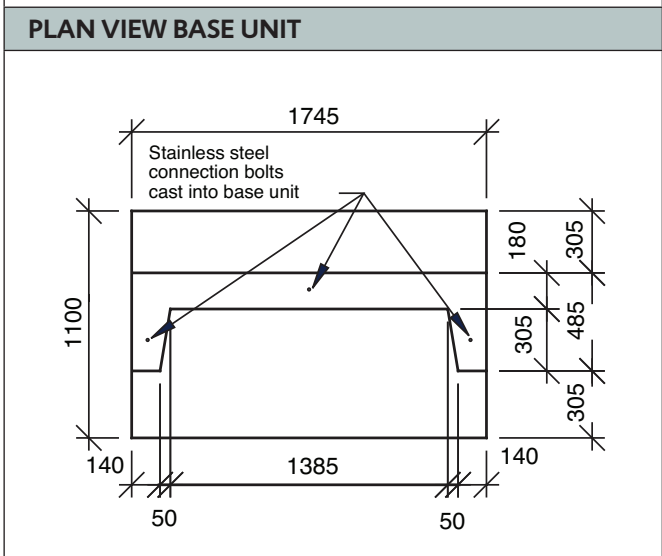
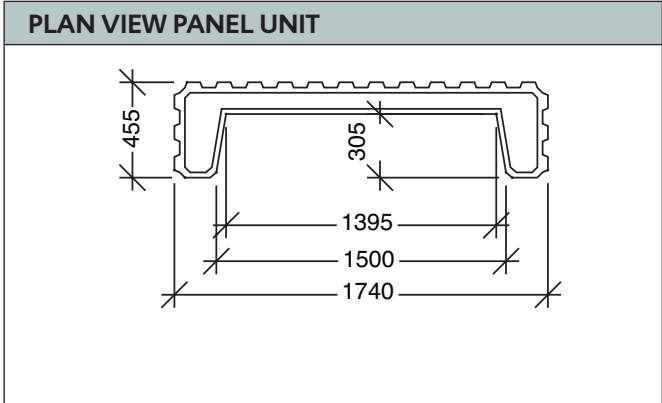
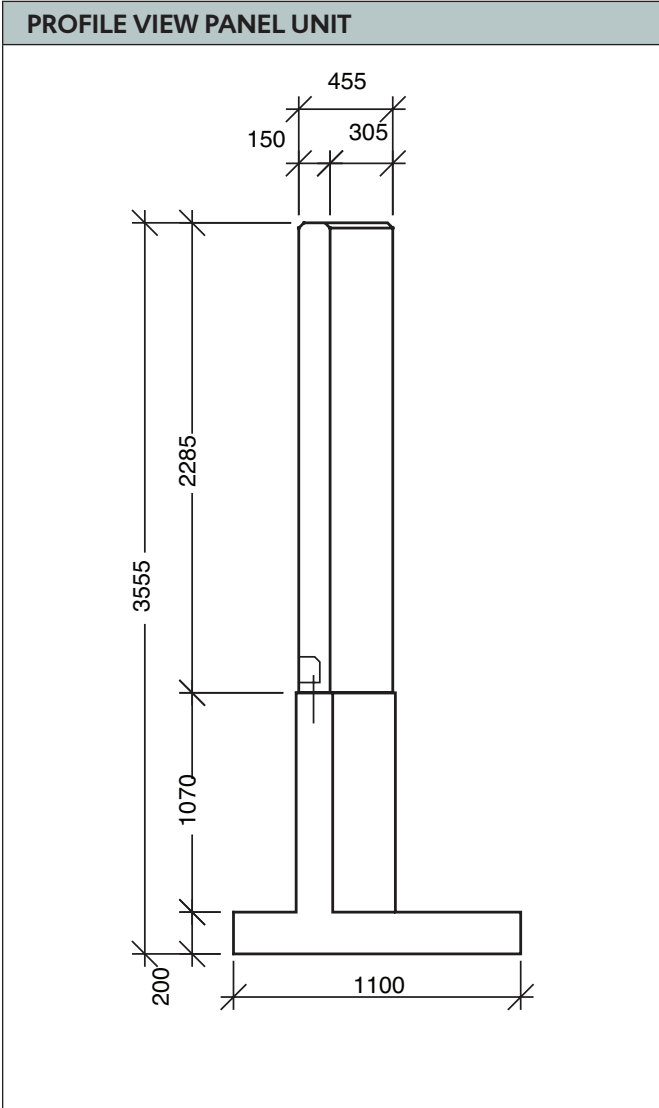


SHAW 097 CONTROL MOUNTING STRUCTURE



NOTE: MOUNTING STRUCTURES ARE DELIVERED IN SEPARATE PIECES FOR ASSEMBLY ON SITE.

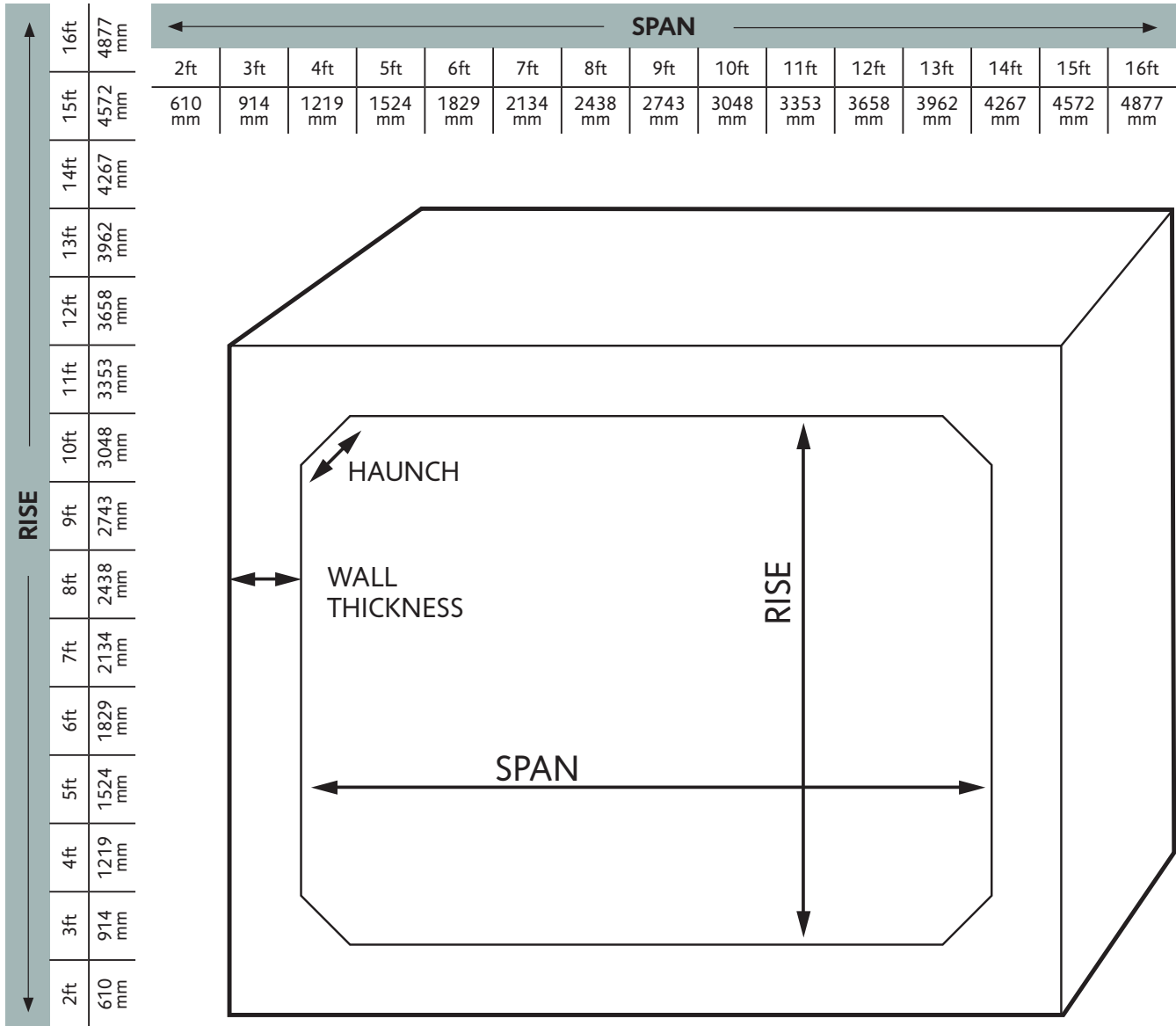
SHAW 097 CONTROL MOUNTING STRUCTURE







AVAILABLE BOX CULVERT SIZES:



IMPORTANT NOTES:

Available Haunch Sizes are: 6 inch (152mm), 8 inch (203mm) and 12 inch (305mm)

Span and Rise are available in increments of 4 inches (102mm)
For example, 6 ft 8 inch x 8 ft 4 inch (2032mm x 2540mm)

Wall thicknesses are available in 2 inch (51mm) increments
For example, 2 inch, 4 inch, 6 inch, etc...

Haunch Size	Min. Rise	Min. Span
6 inch	2 ft	3 ft
8 inch	3 ft	3 ft
12 inch	4 ft	4 ft