



# The Speed of Gravity.

Gravity retaining walls built with Stone Strong System's Big Block Technology are the most efficient solution on the market.





## VERSATILITY.

### BLOCK SYSTEMS WITH WALL-TO-WALL ADAPTABILITY.

- ▶ Proud to offer both gravity and MSE walls. We have produced gravity walls with heights in excess of 20 feet, and MSE walls that have topped almost 50 feet.
- ▶ Bigger means faster. A small crew and a few pieces of equipment can install up to 1,200 square feet of block in one day.
- ▶ Blocks' tapered sides make it easy to create both straight and winding designs—even convex, concave, and circular designs.
- ▶ The ability to create nearly vertical walls allows you to install an attractive wall in places where only poured concrete was possible before.
- ▶ Can be scaled proportionately for use in commercial and industrial settings—ideal for highway, railroad, commercial and waterways.

## SIZE AND MASS.

### OUR BIG BLOCKS ARE A REALLY BIG DEAL.

- ▶ Due to their size, our blocks dramatically reduce labor costs. Installation is many times faster than a small-block project—24 square feet of wall can be set at one time.
- ▶ Walls can reach heights of 12 to 15 feet without geogrid or soil reinforcement. With proper engineering, our walls can reach heights of 40 feet.
- ▶ The sheer size and weight of Stone Strong blocks hold the system together to create a true gravity wall.
- ▶ Environmentally friendly option for applications in and around water. Provides erosion control and shoreline protection.
- ▶ Scaled in size to be proportionate in tall commercial and industrial settings making them ideal for highway, railroad, commercial and waterways to name a few.

## ENGINEERED SYSTEM. THE PERFECT FIT FOR ANY PROJECT.

- ▶▶ Blocks interlock securely and precisely without any mechanical assistance. Stone infill in the block provides 100% efficient connection strength.
- ▶▶ Stone Strong blocks contain a built-in drainage system. This is the only wall system with a built-in drainage system requiring no additional parts or labor.
- ▶▶ This complete system offers various accessories to put the finishing touches on your project.
- ▶▶ No tieback eliminates costly over-excavation and any potential future conflict with utility easements. The blocks stack almost vertically maximizing the use of valuable land.
- ▶▶ Lifting loops balance the load during installation, perfectly aligning the units for consecutive courses.

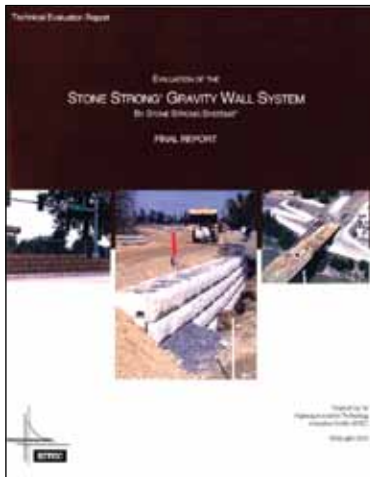


---

## PRECAST. OUR COMMITMENT TO CUSTOMER SATISFACTION IS SET IN STONE.

- ▶▶ Manufactured to product specifications to assure that units are uniform in weight, dimensional tolerances and strength.
- ▶▶ Our molds were made from stone blocks hand-chiseled by artisans, which ensures a realistic facade.
- ▶▶ Produced with air-entrained 4,000-PSI concrete, which protects the block through the freeze/thaw cycles.
- ▶▶ Unlike other brands, returned concrete is never used for Stone Strong blocks.





## EXPERT EVALUATIONS. THE ONLY THING STRONGER THAN OUR WALLS IS OUR REPUTATION.

- ▶▶ Has undergone rigorous HITEC<sup>1</sup> review by committee of national experts.
- ▶▶ Ruled by HITEC as a viable alternative to traditional retaining systems.
- ▶▶ Designed and tested to meet the NCMA<sup>2</sup> SRWU-2 and ASTM<sup>3</sup> D6638.
- ▶▶ Evidence of conformance with the AASHTO<sup>4</sup> methodologies.

1 HITEC – Highway Innovation Technology Evaluation Center

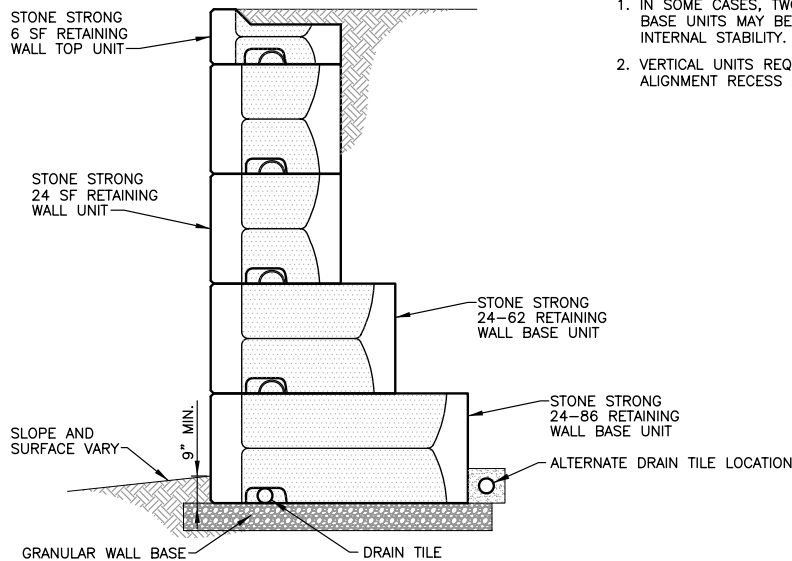
2 NCMA – National Concrete Masonry Association

3 ASTM – American Society for Testing and Materials

4 AASHTO – American Association of State Highway and Transportation Officials



# Get up to speed on the latest technology.

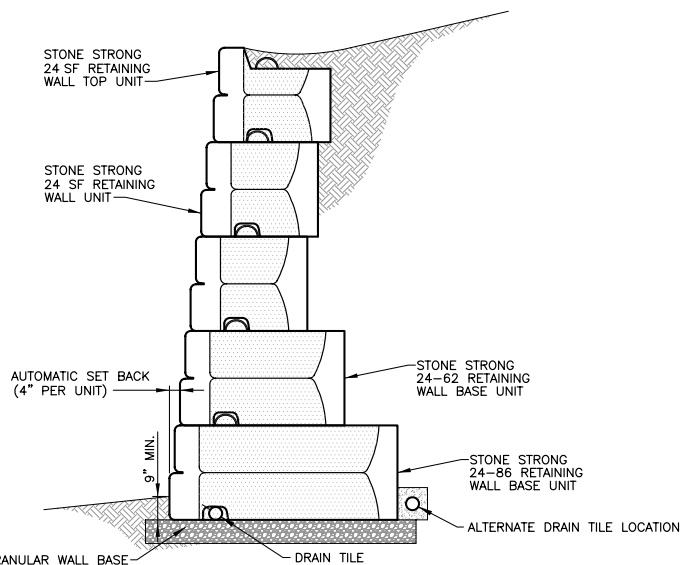


**TYPICAL GRAVITY WALL CROSS SECTION**

NOT TO SCALE

**NOTES:**

1. IN SOME CASES, TWO 24-62 OR 24-86 BASE UNITS MAY BE REQUIRED FOR INTERNAL STABILITY.
2. VERTICAL UNITS REQUIRE A MODIFIED ALIGNMENT RECESS AND A MODIFIED FACE.



**24 SF GRAVITY WALL CROSS SECTION W/ EXTENDER SERIES BASE**

NOT TO SCALE

### 24 SF BLOCK

8' x 3' x 44"

The 24 SF Block contributes to the speed of installation. A small crew and a couple pieces of equipment can install 1,200 SF a day.



### 90° BLOCK

8' x 3' x 4'

The 90° Block provides for inside and outside 90° turns.



### 6 SF BLOCK

4' x 18" x 44"

The 6 SF Block allows for tighter turning radius, wall steps at 18" increments and vertical & horizontal adjustments.



### 45° BLOCK

4' x 18" x 4.25'  
x 4.25' x 8.25'

The 45° Block provides for inside and outside 45° turns.



### END / CORNER BLOCK

4' x 18" x 2'

The End / Corner Block is used for 90° turns and for end finish treatments.



### DUAL FACE BLOCK

8' x 18" x 28"

The Dual Face Block provides for above grade applications.



### 3 SF BLOCK

2' x 18" x 44"

The 3 SF Block allows the wall to stay on running bond.



### STEP / CAP BLOCK

8' x 7" x 32"

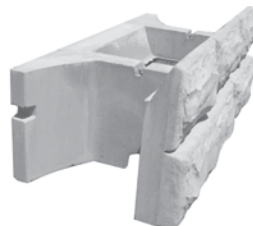
The Step / Cap is used for stair and step applications and as a wall cap.



### 24 SF TOP BLOCK

8' x 3' x 44"

The Top Block has an 8" recess at the top of the face to allow for multiple finish options.



### 24 SF MASS EXTENDER BLOCK

8' x 3' x 56"

The addition of the extender to the 24 SF block provides for greater gravity wall heights.



### 24-62

8' x 3' x 62"

**NEW**

Build walls up to 18' tall with no tie-back.



### 24-86

8' x 3' x 86"

**NEW**

Setting the standard for tall gravity walls. At 22.5', it can go vertical with no tie-back.

